

# HOW TO TRANSFER A FILE FROM THE DEVICE INTERN MEMORY TO THE USB STICK

We are going to see how to transfer from intern memory of the device a file to USB stick. We use two examples: one which we get a recorded configuration in the device and a second on which we get a curve.

## I: Requisites

Must have configured the desired channel(s).

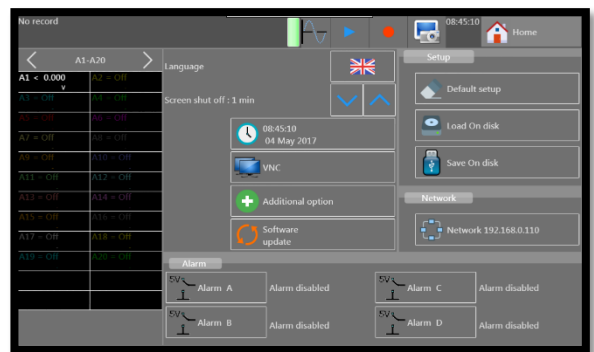
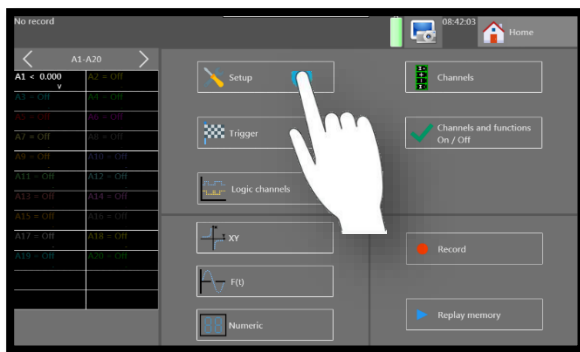
For the channel configuration, refer to note **NA\_ENR\_DAS240\_CONF\_VOIE**.

Must have set and made a record.

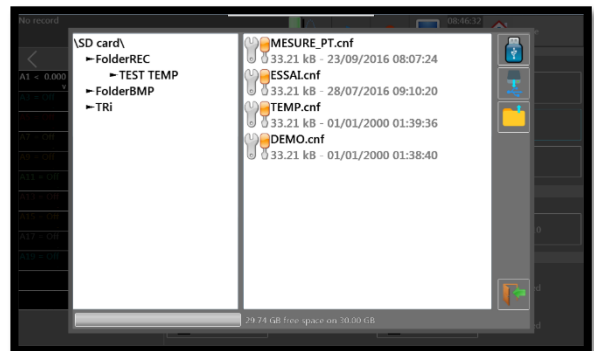
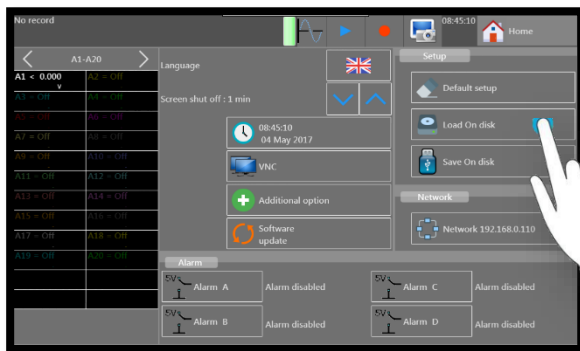
To set a record, refer to note **NA\_ENR\_DAS240\_PARAM\_DECL**.

## II: Configuration transfer

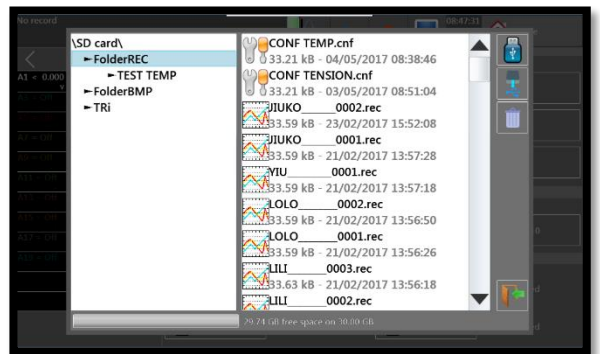
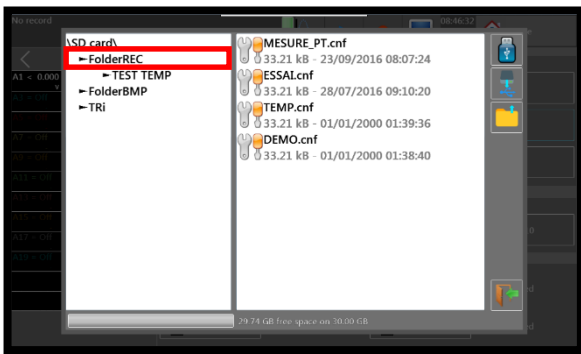
- 1- Access to the "Setup" menu by pressing the corresponding button:



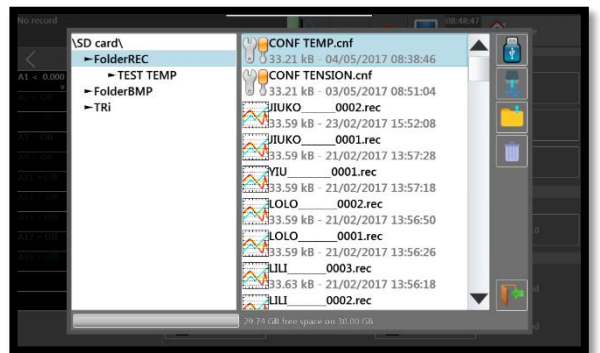
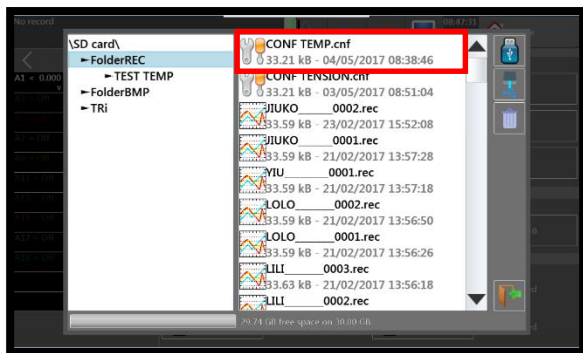
- 2- Access to intern memory of the device by pressing button "Save on disk":



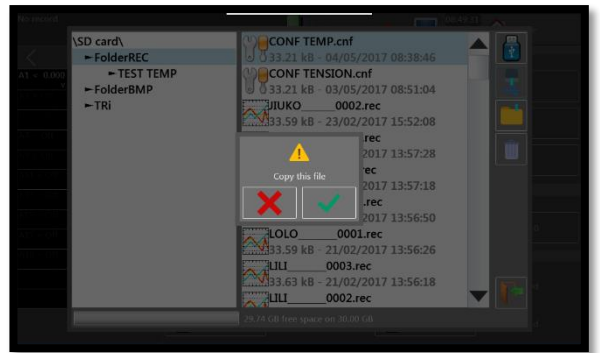
3- Choose the folder where your configuration has been saved. In this case, we will choose the folder: "FolderREC":



4- Choose the configuration you wish:

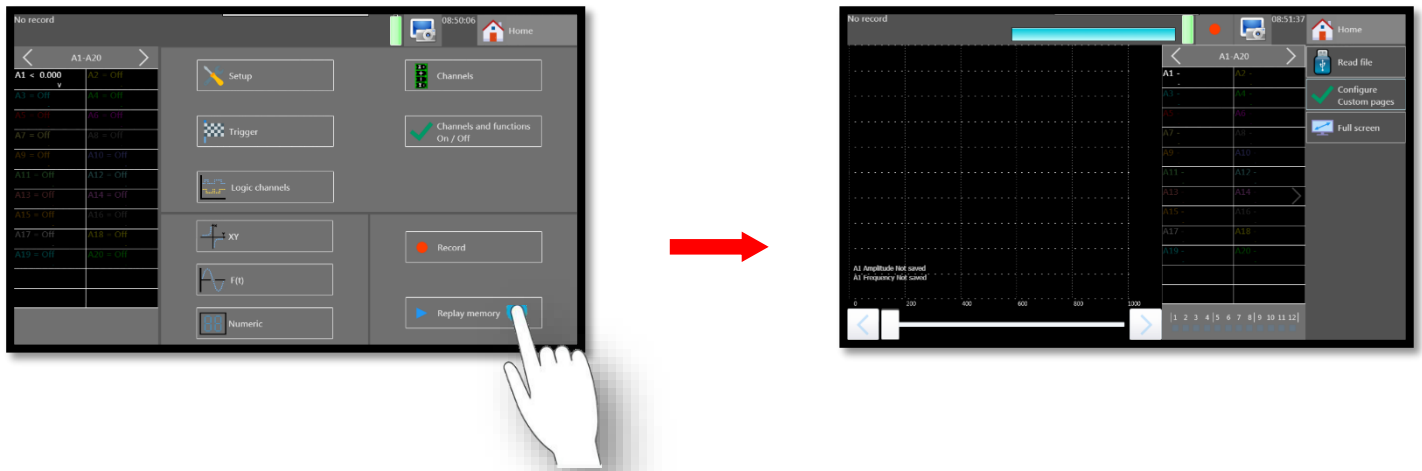


5- Copy the file on the USB stick by pressing on the corresponding button:

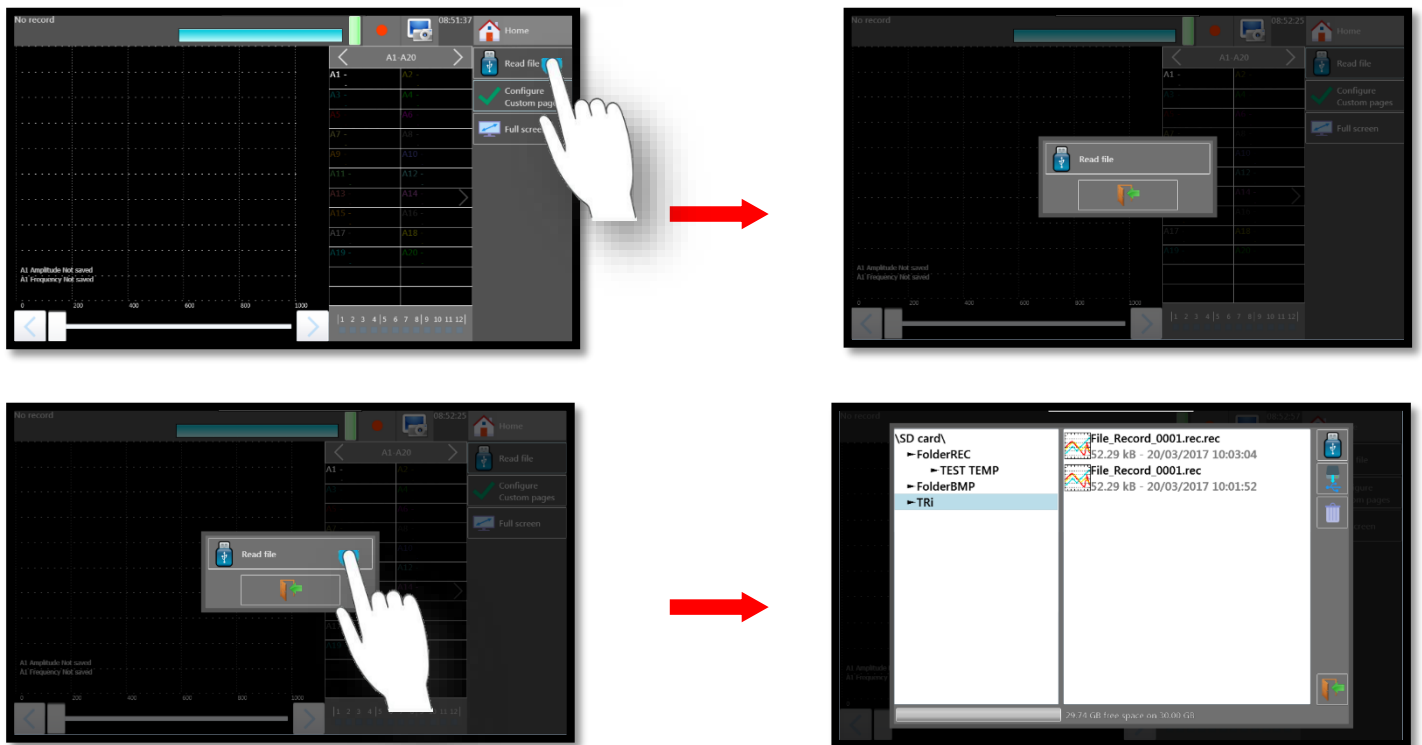


### III: The curve transfer

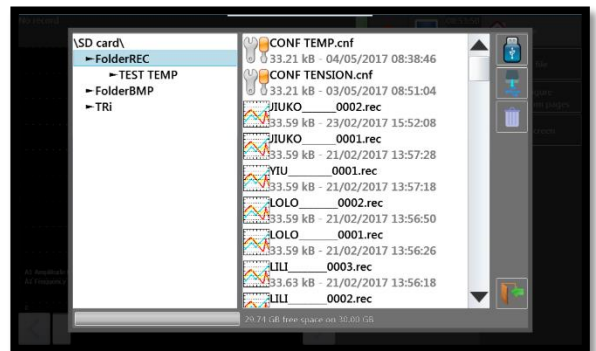
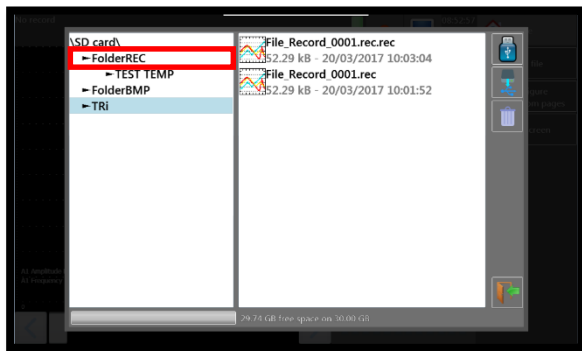
1- Access to the “Replay memory” menu by pressing on the corresponding button:



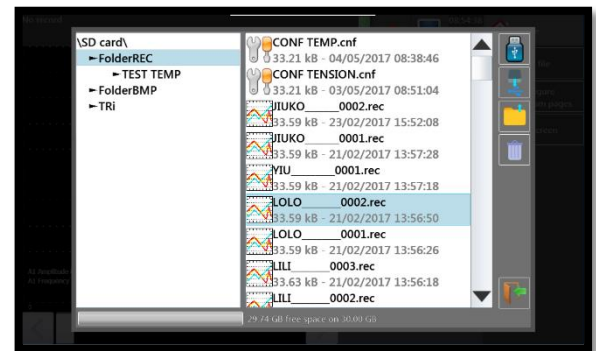
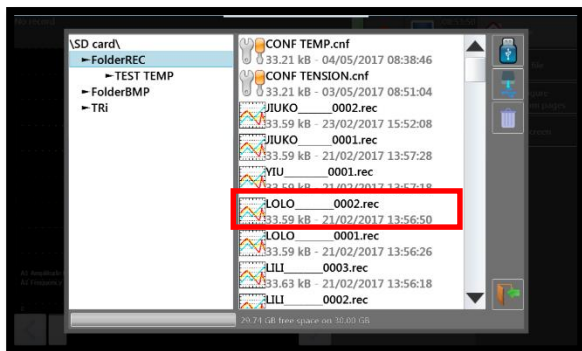
2- Access to the intern memory of the device by pressing button “Read a file”:



3- Choose the folder where your curve has been saved. In this case we choose the folder "FolderREC":



4- Choose the curve you wish:



5- Copy the file on the USB stick by pressing the corresponding button:

