

# HOW TO SET A RECORD ON DAS240

On the handheld recorder DAS240, it is possible to record a signal. This function allows you to save a screenshot of a measurement that you just performed: voltage, current, temperature measurement...

We are going to see how to set a record with two triggers (one to launch the record, the other to stop it). To do so, we will set a voltage on the first channel. We will record this channel when the voltage will be between 10 and 20V.

## I: Requisites

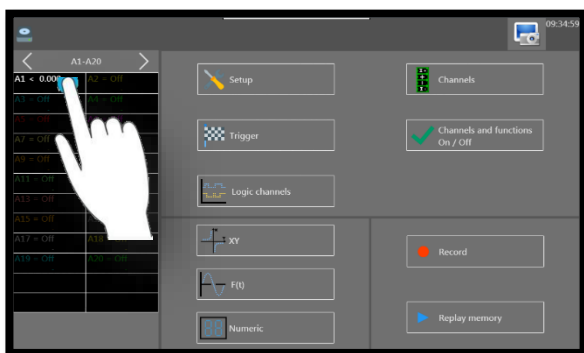
We have to set the channel that we want to record. For channel 1 configuration, refer to the note [NA\\_ENR\\_DAS240\\_CONF\\_VOIE](#).

## II: Setting a record with two triggers

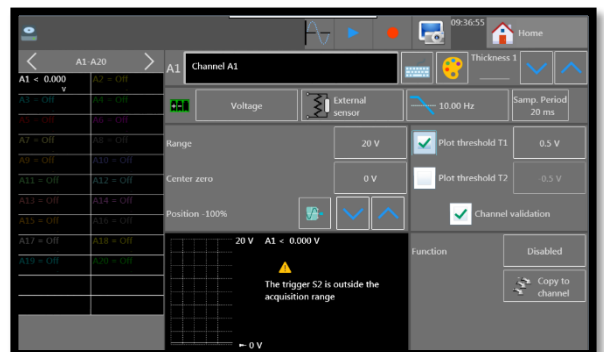
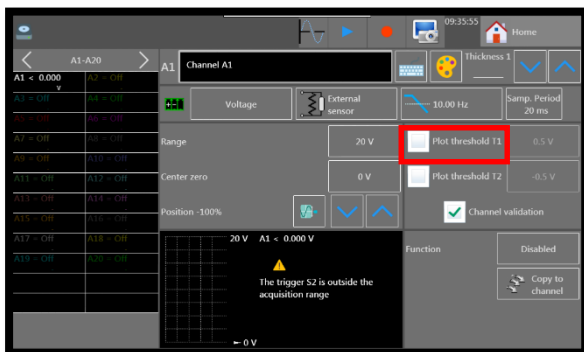
To set the record, there are two steps: first we will configure a threshold and secondly we will configure the other one.

We are going to set the start of the record:

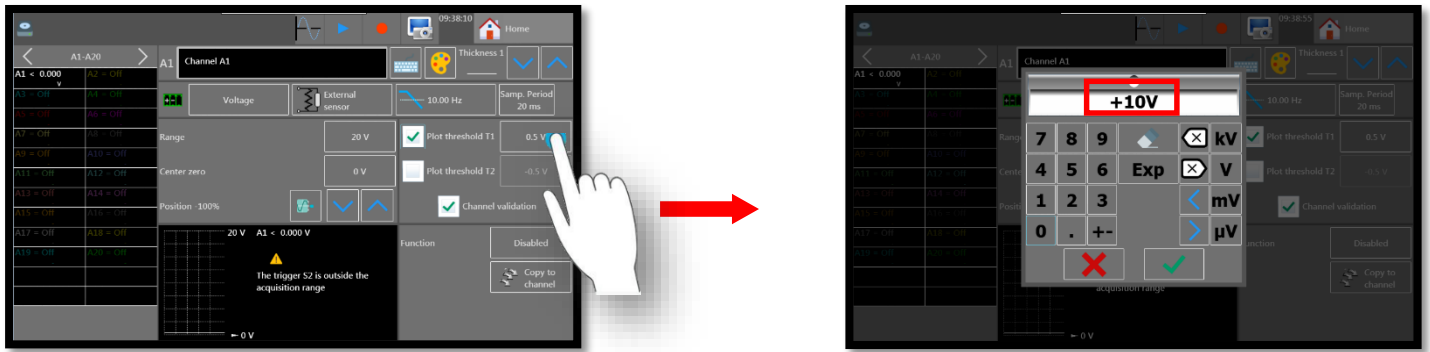
- 1- Go to the channel 1 settings by pressing the channel to be set:



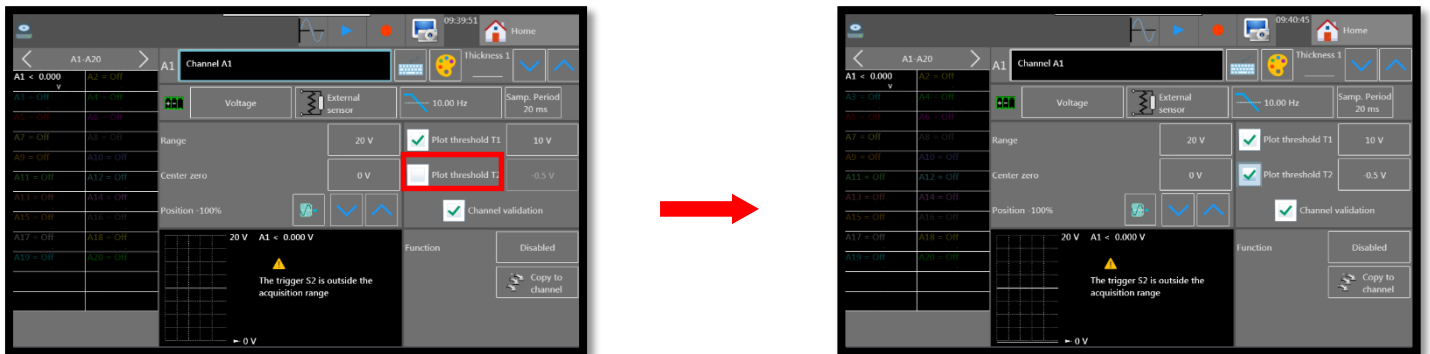
- 2- Select the first threshold:



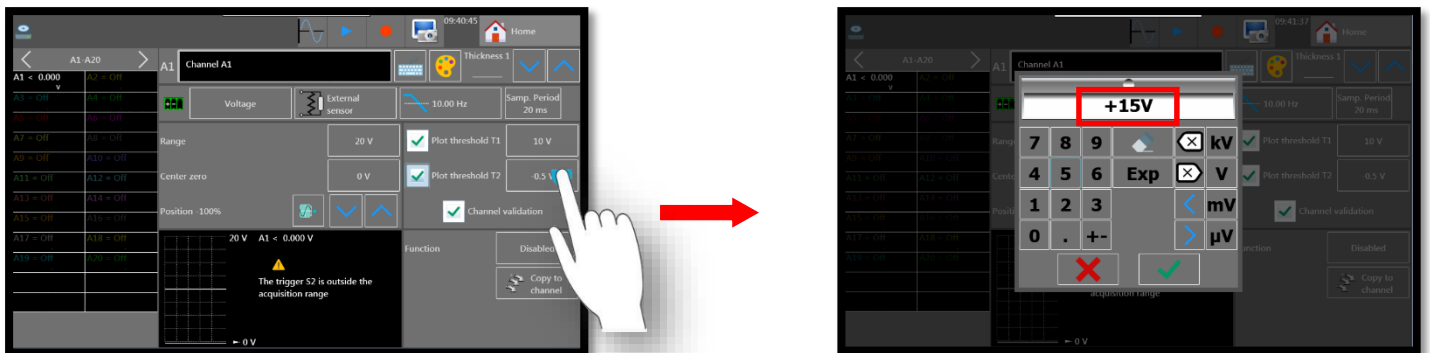
3- Choose the value of the first threshold. Here, a 10V threshold:



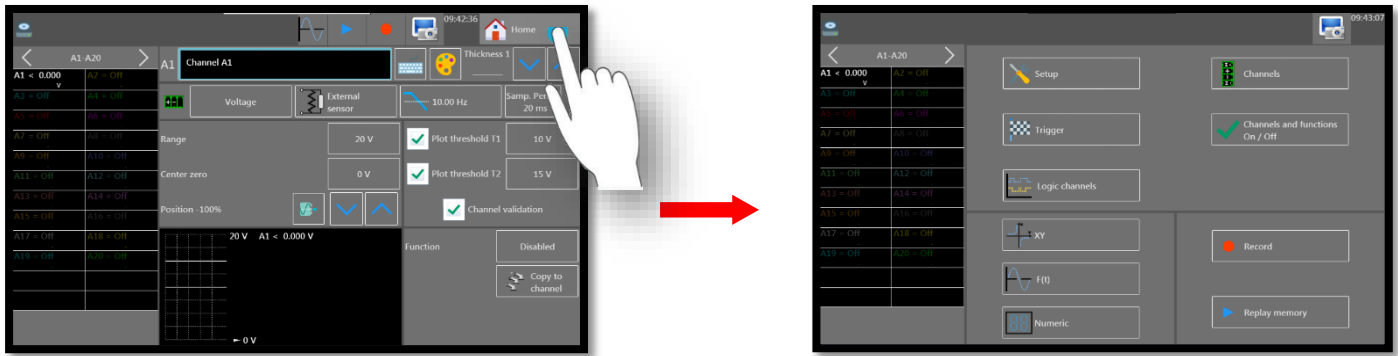
4- Select the second threshold:



5- Choose the value of the second threshold. Here, a 15V threshold:



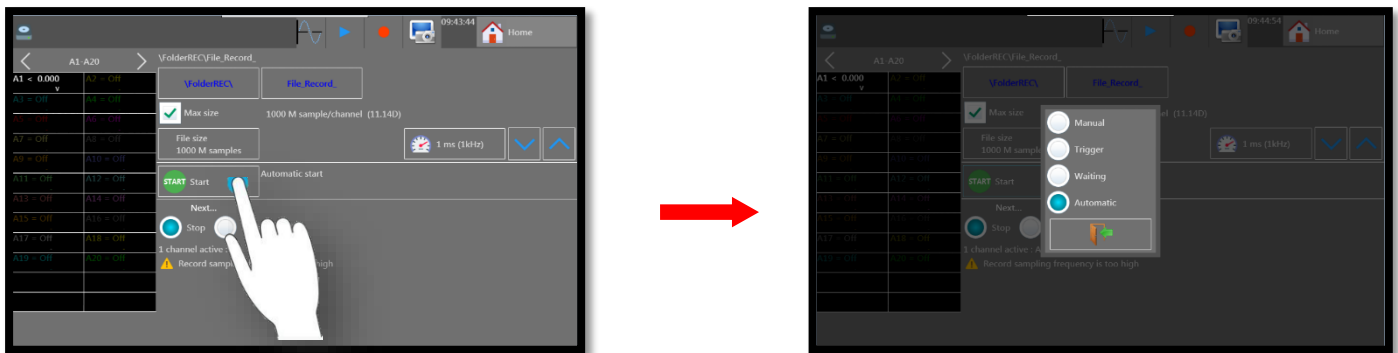
6- Press "Home":



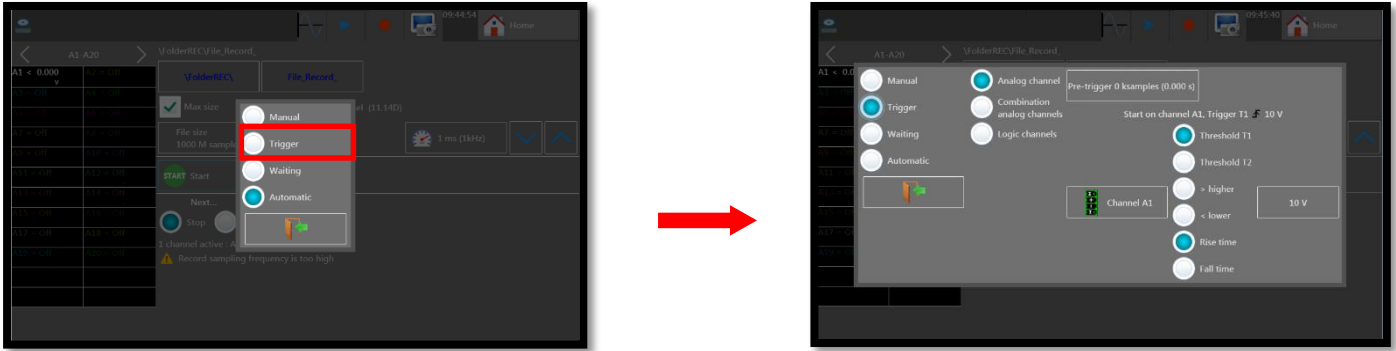
7- Select "Trigger":



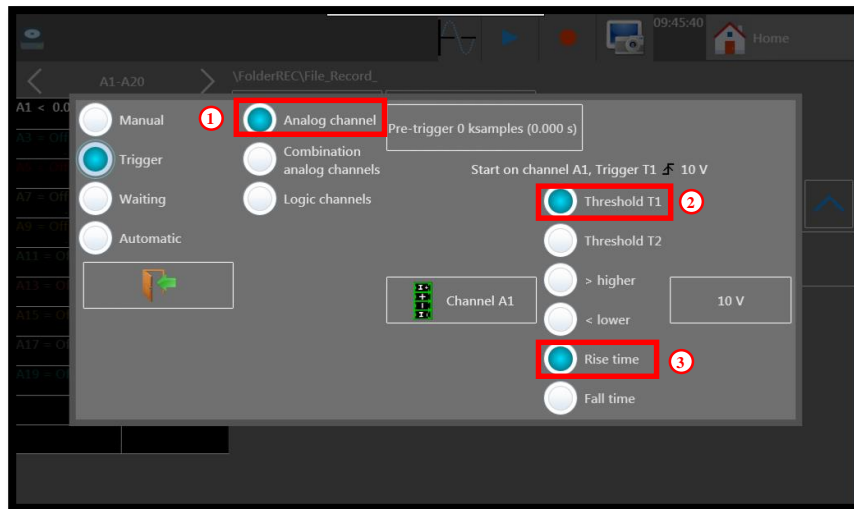
8- Press "Start":



9- Select "Trigger":



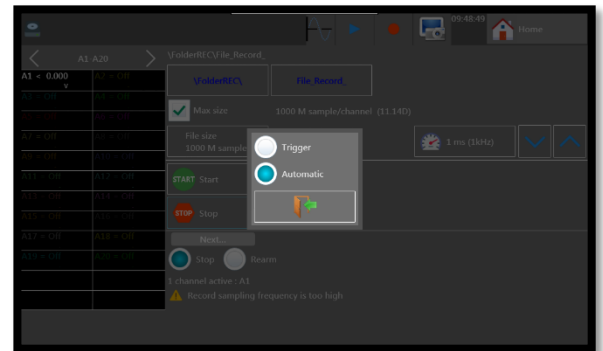
10- Manage the threshold trigger to launch the record:



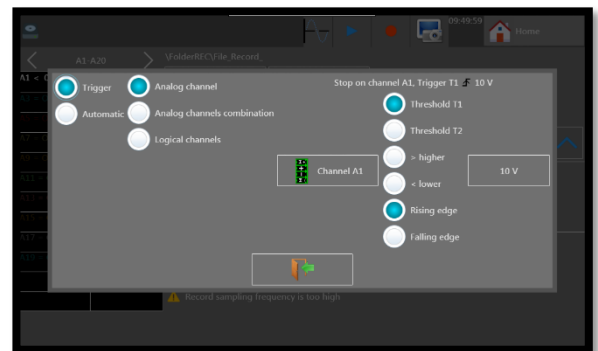
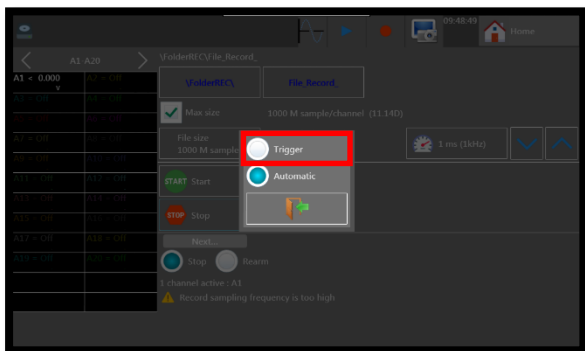
1. Select the type of channel to define, here choose "Analog channel"
2. Choose the start threshold, in our example we will use the threshold 1
3. Choose when the record will start, here we want to start recording when the voltage becomes negative, so we will choose "Rising edge"

Now we are going to set the stop of the record:

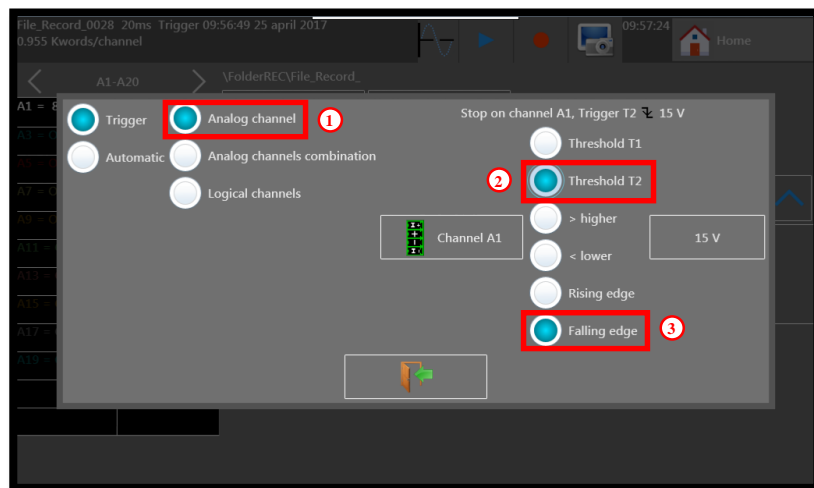
1- Select "Stop" by pressing the "Stop" button:



2- Select "Trigger":

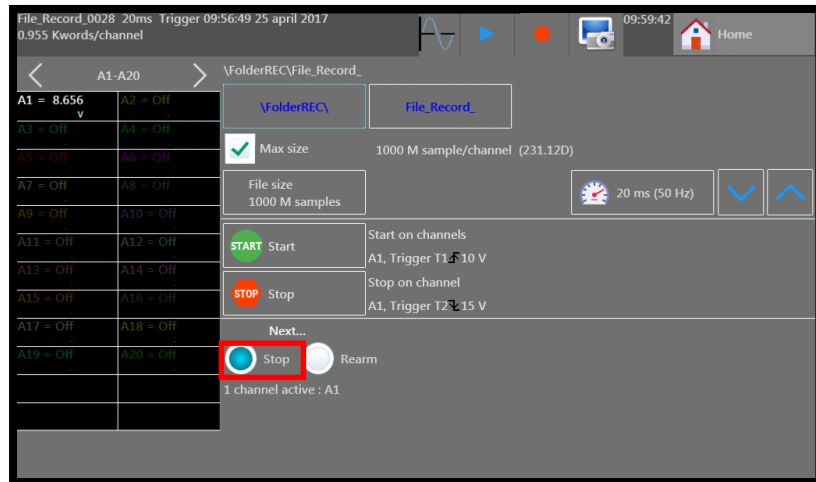


3- Set the record stop conditions:



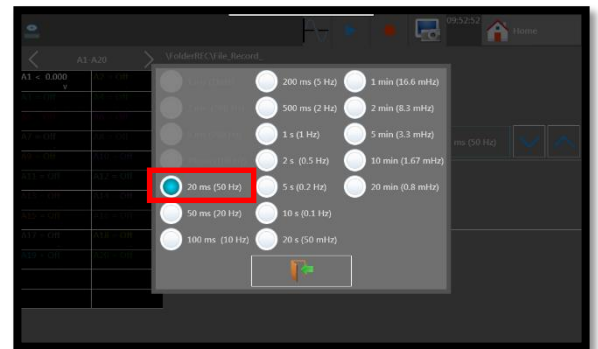
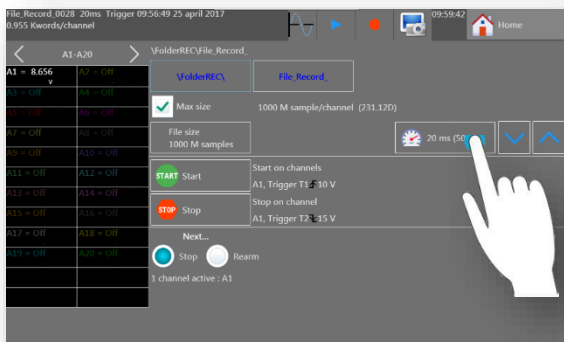
1. Select the type of channel to define. Here "Analog channel"
2. Choose the threshold that you want as end threshold, in our example we will use the threshold 2
3. Choose when the record will end, here we want to record to end when the voltage becomes superior to 200V, so we will choose "Falling edge"

4- Set the parameter « Next », here we want to do a single acquisition : Choose « Stop » :

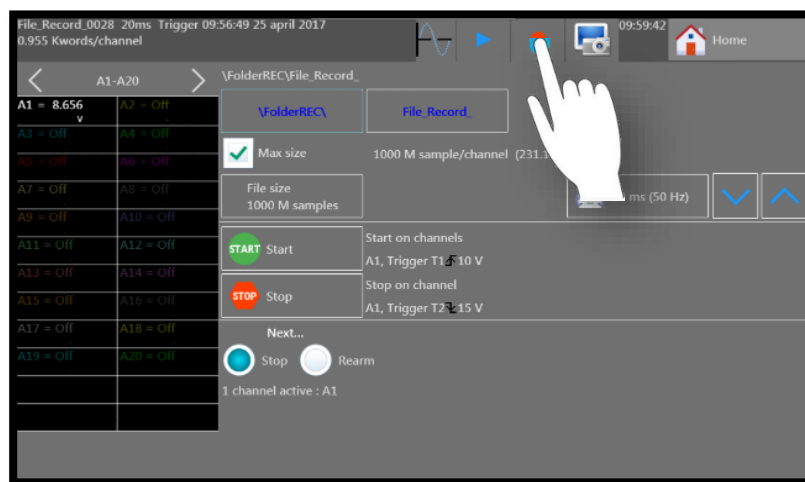


Rearm: This option enables to do records.

5- Choose the sampling frequency. Here “20 ms”:



6- Press the button to start recording:



7- The record is done, only the part between 10V (Rising edge) and 15V (Falling edge) has been recorded :

